



Diamond Rainbows Quilt

Featuring Hand Crafted Cottons by Jane Sassaman

A beautiful rainbow of hand dyed color!

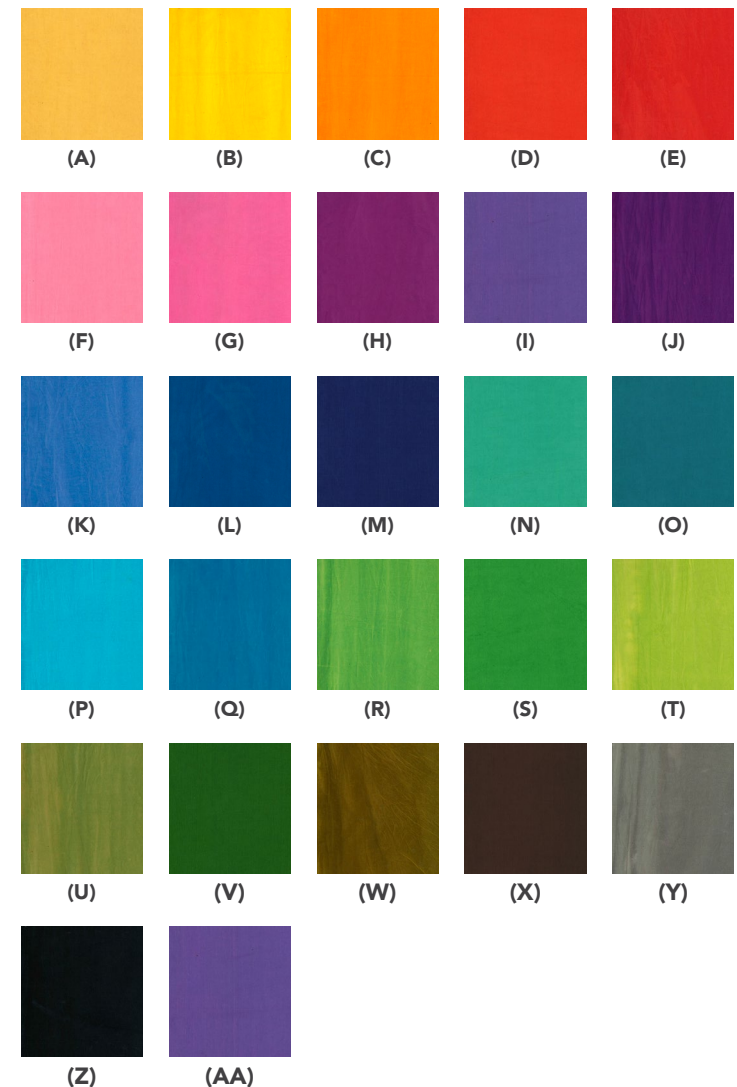
Collection:	Hand Crafted Cottons by Jane Sassaman
Technique:	Templates, Piecing, Quilting
Skill Level:	Advanced Beginner
Finished Size:	Finished Size: 51½" x 62" (130.81cm x 157.48cm) Finished Block: 16" x 4" (40.64cm x 10.16cm)

All possible care has been taken to assure the accuracy of this pattern. We are not responsible for printing errors or the manner in which individual work varies. Please read the instructions carefully before starting this project. If kitting, it is recommended a sample is made to confirm accuracy.

Project designed by Jane Sassaman | Tech edited by Alison M. Schmidt

Fabric Requirements

DESIGN	COLOR	ITEM ID	YARDAGE
(A) Hand Crafted Cottons	Marmalade	HCJS001.MARMALADE	FQ (45.72cm x 53.34cm)
(B) Hand Crafted Cottons	Dandelion	HCJS001.DANDELION	FQ (45.72cm x 53.34cm)
(C) Hand Crafted Cottons	Monarch	HCJS001.MONARCH	FQ (45.72cm x 53.34cm)
(D) Hand Crafted Cottons	Vermillion	HCJS001.VERMILLION	FQ (45.72cm x 53.34cm)
(E) Hand Crafted Cottons	Tomato	HCJS001.TOMATO	FQ (45.72cm x 53.34cm)
(F) Hand Crafted Cottons	Blush	HCJS001.BLUSH	FQ (45.72cm x 53.34cm)
(G) Hand Crafted Cottons	Peony	HCJS001.PEONY	FQ (45.72cm x 53.34cm)
(H) Hand Crafted Cottons	Pansy	HCJS001.PANSY	FQ (45.72cm x 53.34cm)
(I) Hand Crafted Cottons	Crocus	HCJS001.CROCUS	FQ (45.72cm x 53.34cm)
(J) Hand Crafted Cottons	Violet	HCJS001.VIOLET	FQ (45.72cm x 53.34cm)
(K) Hand Crafted Cottons	Lobelia	HCJS001.LOBELIA	FQ (45.72cm x 53.34cm)
(L) Hand Crafted Cottons	Lapis	HCJS001.LAPIS	FQ (45.72cm x 53.34cm)
(M) Hand Crafted Cottons	Eggplant	HCJS001.EGGPLANT	FQ (45.72cm x 53.34cm)
(N) Hand Crafted Cottons	Jade	HCJS001.JADE	FQ (45.72cm x 53.34cm)
(O) Hand Crafted Cottons	Viridian	HCJS001.VIRIDIAN	FQ (45.72cm x 53.34cm)
(P) Hand Crafted Cottons	Cancun	HCJS001.CANCUN	FQ (45.72cm x 53.34cm)
(Q) Hand Crafted Cottons	Adonis	HCJS001.ADONIS	FQ (45.72cm x 53.34cm)
(R) Hand Crafted Cottons	Kelly	HCJS001.KELLY	FQ (45.72cm x 53.34cm)
(S) Hand Crafted Cottons	Emerald	HCJS001.EMERALD	FQ (45.72cm x 53.34cm)
(T) Hand Crafted Cottons	Peridot	HCJS001.PERIDOT	FQ (45.72cm x 53.34cm)
(U) Hand Crafted Cottons	Wasabi	HCJS001.WASABI	FQ (45.72cm x 53.34cm)
(V) Hand Crafted Cottons	Cucumber	HCJS001.CUCUMBER	FQ (45.72cm x 53.34cm)
(W) Hand Crafted Cottons	Khaki	HCJS001.KHAKI	FQ (45.72cm x 53.34cm)
(X) Hand Crafted Cottons	Pecan	HCJS001.PECAN	FQ (45.72cm x 53.34cm)
(Y) Hand Crafted Cottons	Charcoal	HCJS001.CHARCOAL	FQ (45.72cm x 53.34cm)
(Z) Hand Crafted Cottons	Jet	HCJS001.JET	1 yard (0.91m)
(AA) Hand Crafted Cottons	Crocus	HCJS001.CROCUS*	$\frac{5}{8}$ yard (0.57m)



* includes binding

Backing (Purchased Separately)

44" (7.43m) wide

Flower Shower / Purple
PWJS136.PURPLE

3½ yards (3.20m)

OR

108" (2.51m) wide

Lotus Leaf / Purple
QBG007.PURPLE

1⅞ yards (1.71m)



Backing
44"



Backing
108"

Additional Recommendations

- 100% cotton thread in colors to match
- 60" x 70" (152.40cm x 177.80cm) batting
- (1) 12" x 18" (30.48cm x 45.72cm) sheet of template plastic (optional) OR Creative Grids® Perfect Rectangle ruler (optional)

Cutting

WOF = Width of Fabric

Fat Quarter WOF = 21"

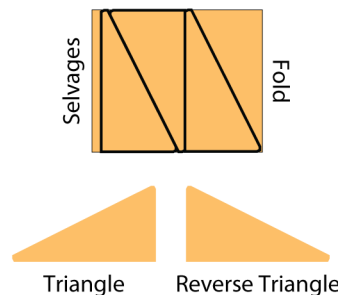
The Triangles and Reverse Triangles can be cut using the template provided on page 7 or the Creative Grids® Perfect Rectangle.

To use the provided template: Trace the Triangle template onto template plastic and cut on the outside lines.

To cut Triangle and Reverse Triangle pieces:

Fold the WOF strip in half, wrong sides together, matching the selvages or short ends. Place the template/ruler right side upon the folded strip. Cut around the template/ruler to get (1) Triangle and (1) Reverse Triangle. Turn the template/ruler 180° and place along the cut edge to cut the next set of triangles. Continue along the strip until the required sets of triangles are cut. The fabric pieces will have bias edges so handle with care to avoid stretching.

Triangle Cutting Diagram



Fabrics A through Y, cut from each:

- (1) 8½" x WOF; sub-cut
- (3) Triangles and
- (3) Reverse Triangles

Fabric Z, cut:

- (1) 8½" x WOF; sub-cut
- (3) Triangles and
- (3) Reverse Triangles
- (3) 5½" x WOF for Top/Bottom Borders
- (3) 2¼" x WOF for Side Borders

Fabric AA, cut:

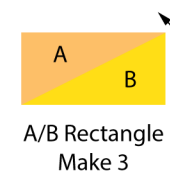
- (7) 2½" x WOF for Binding

Instructions

All seam allowances are ¼" and pieces are sewn right sides together. Press seam allowances following the arrows in the diagrams.

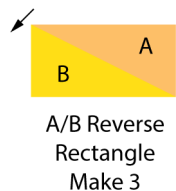
1. Sew together (1) **Fabric A** and B Triangle. (**Fig. 1**) Repeat to make (3) **A/B** Rectangle units (8½" x 4½").

Fig. 1



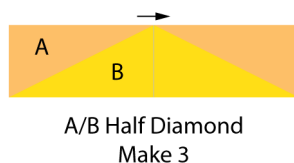
2. Sew together (1) **Fabric A** and **B** Reverse Triangle. (**Fig. 2**) Repeat to make (3) **A/B** Reverse Rectangle units ($8\frac{1}{2}'' \times 4\frac{1}{2}''$).

Fig. 2



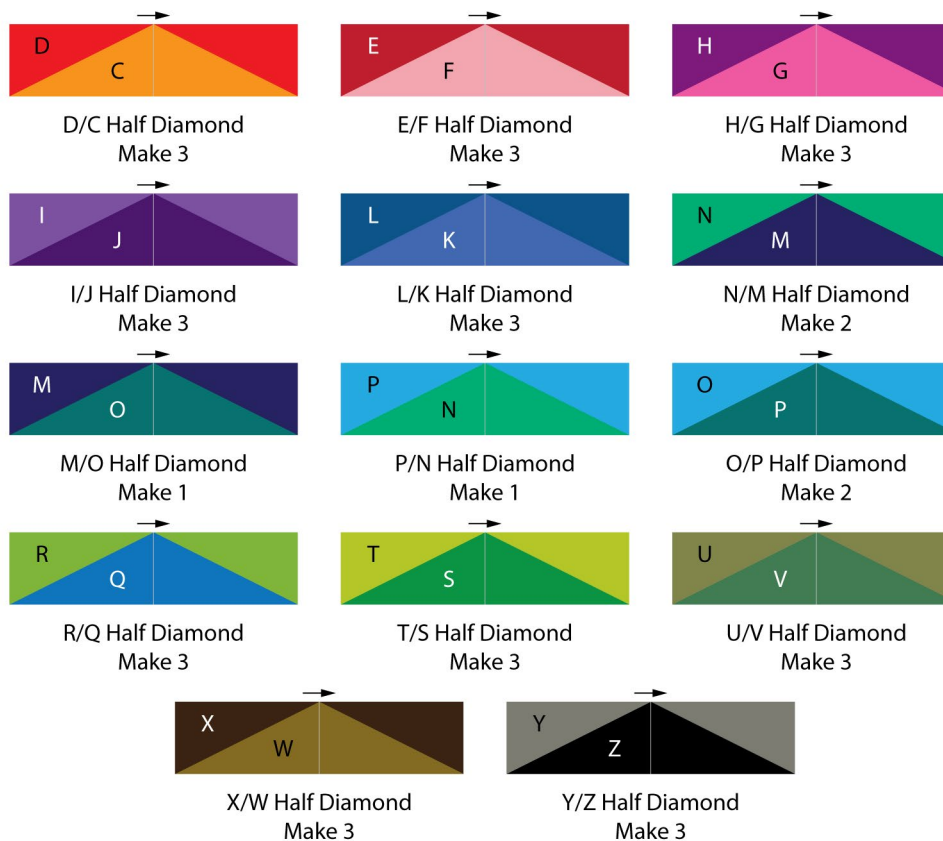
3. Sew together (1) **A/B** Rectangle and Reverse Rectangle. (**Fig. 3**) Repeat to make (3) **A/B** Half Diamond blocks ($16\frac{1}{2}'' \times 4\frac{1}{2}''$).

Fig. 3



4. Repeat Steps 1 through 3 to make Half Diamond blocks in the fabric pairs shown in **Fig. 4**. Note the varied quantity made of some pairs.

Fig. 4



Quilt Top Assembly

Note: Follow the **Quilt Layout** diagram on page 6 for block placement and orientation. Measure the quilt center before cutting border pieces and adjust measurements given if necessary.

5. Sew the Half Diamond blocks into (3) Columns of (13) Half Diamonds each. Both outer columns are the same, with the block placed with fabrics in alphabetical order from top to bottom. The center column uses the single Half Diamonds in the middle.
6. Sew the Columns together to complete the Quilt Center (48½" x 52½").
7. Sew together the (3) 2¼" **Fabric Z** Side Border strips end-to-end into one long strip. Cut (2) 2¼" x 52½" border strips. Sew to the side edges of the Quilt Center (52" x 52½").
8. Sew together the (3) 5½" **Fabric Z** Top/Bottom Border strips end-to-end. Cut (2) 5½" x 52" border strips. Sew to the top and bottom edges of the Quilt Center to complete the Quilt Top (52" x 62½").

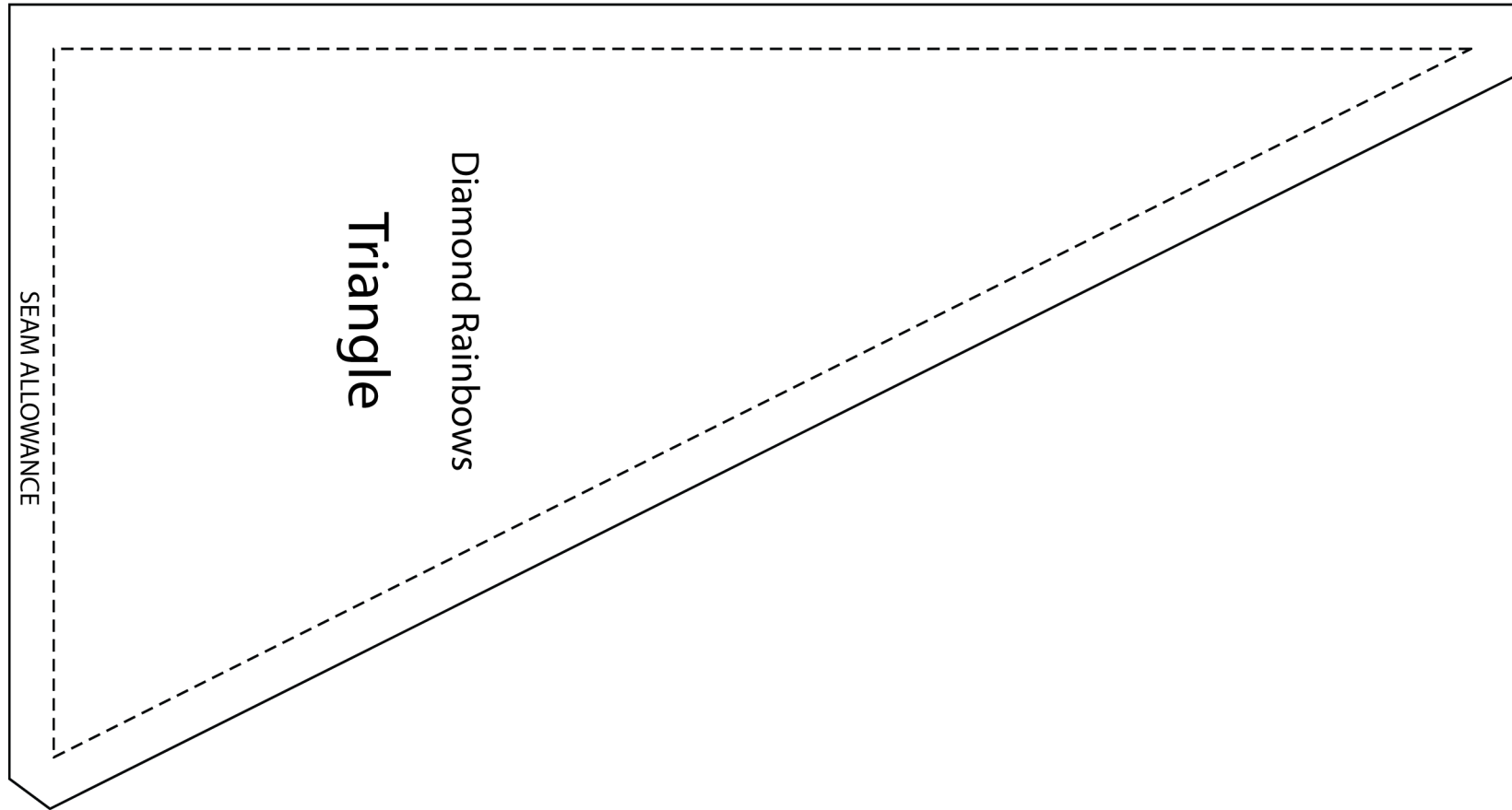
Finishing

9. Sew together the 2½" **Fabric AA** binding strips end-to-end using diagonal seams. Trim seam allowances to ¼" and press seams open. Press the binding strip in half wrong sides together.

10. Layer backing (wrong side up), batting, and quilt top (right side up). Baste the layers together and quilt as desired. Trim excess batting and backing even with the top after quilting is completed.
11. Leaving an 8" tail of binding, sew the binding to the top of the quilt through all layers matching all raw edges. Miter corners. Stop approximately 12" from where you started. Lay both loose ends of binding flat along quilt edge. Where the loose ends meet, fold them back on themselves and press to form a crease. Using this crease as your stitching line, sew the two open ends of the binding right sides together. Trim seam to ¼" and press open. Finish sewing binding to quilt.
12. Turn the binding to the back of quilt and hand-stitch in place.

Quilt Layout





This square should
measure 1" x 1"
(2.54cm x 2.54cm)
when printed.

***** Measure templates before cutting to confirm printing at 100%*****